

TRANSNET RAIL INFRASTRUCTURE MANAGER



B-Network Branch Line Profiles: Ceres Wolseley to Prince Alfred Hamlet Region: Western Region

Annexure A: B-Network Ceres Wolseley to Prince Alfred Hamlet BL Profile

B-Network Name	Location	Region	Land size
Ceres Wolseley to Prince	Wolseley to Prince Alfred Hamlet	Western	± 28 km m ²



Figure 1: Section overview: Wolseley – Prince Alfred Hamlet

Background

The Ceres Railway track was originally built at the turn of the 20th century, starting in July 1910 and was completed in May 1912 had been closed for nearly a decade, but has been reopened for both freight and tourist trains. The line connects Wolseley to Ceres and is traversed by scenic views, making it a popular spot for travelers. The Ceres Branch railway line is situated in Western Cape Province, approximately 150km northeast of the City of Cape Town (Figure 2). The route spans approximately 28 km from Wolseley to Prince Alfred Hamlet in the Western Cape (Figure 1); however, the trolley inspection was

Annexure A: B-Network Ceres Wolseley to Prince Alfred Hamlet BL Profile

conducted from Wolseley to Ceres, covering a total distance of 22 km. The section between Ceres and Prince Alfred was completely covered with overgrown vegetation, which made it impossible to run the trolley beyond Ceres. The line is classified as a branch line, designed to operate with permissible 16-ton axle loads. It is a single-track, non-electrified line operating with steam and diesel locomotives, and is primarily used for transporting agricultural goods, such as fruit, and offering heritage steam train experiences. The coordinates for the Ceres railway station are GPS coordinates Latitude -33.377134 and Longitude 19.306024. The single railway line consists of 30 kg rails on steel sleepers with a section speed of 30km/h. There are five railway bridges and one pedestrian bridge and several cuttings and embankments along the route.

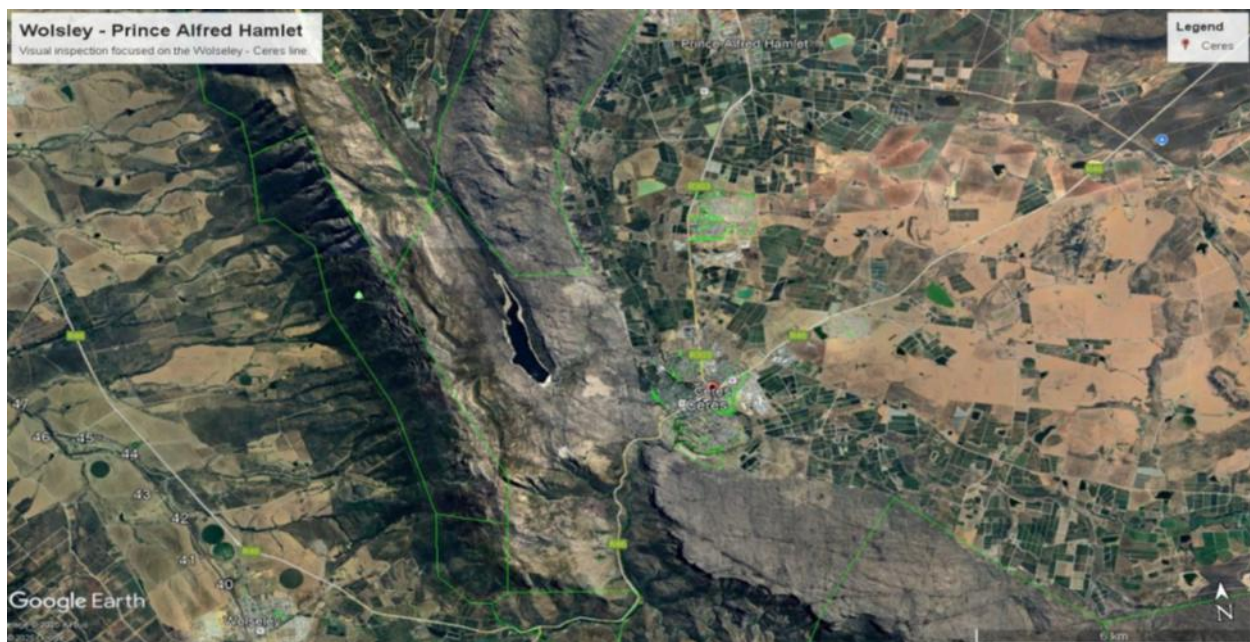


Figure 2: Google Earth image of Wolseley – Prince Alfred Hamlet Section

Infrastructure Condition - Bidders are encouraged to conduct their own due diligence on the line.